

LA MUSICA



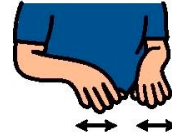
E`



UN DISCORSO



FATTO



DI

DI

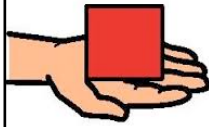
SUONI.



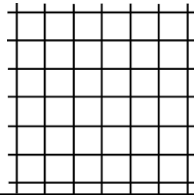
LA MUSICA



HA



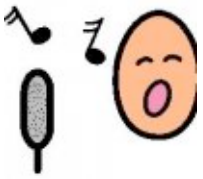
UNA STRUTTURA



PRECISA.

PRECISA.

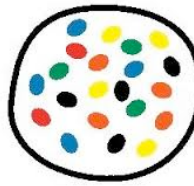
UNA MELODIA



E`



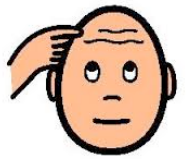
UN INSIEME



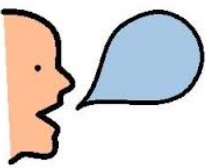
DI

DI

PENSIERI



ESPRESSI



CON

CON

LE NOTE.

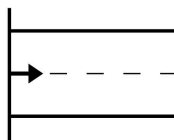


L'INCISO

E`



L'INIZIO



DEL

DEL

BRANO.



LA SEMIFRASE

LA SEMIFRASE

E`



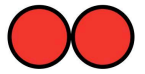
DUE

2

INCISI

INCISI

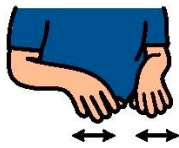
VICINI.



IL BRANO
MUSICALE



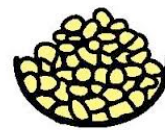
E`
FORMATO



DA

DA

TANTE



FRASI
MUSICALI.



INCISO

INCISO

SEMIFRASE

FRASE